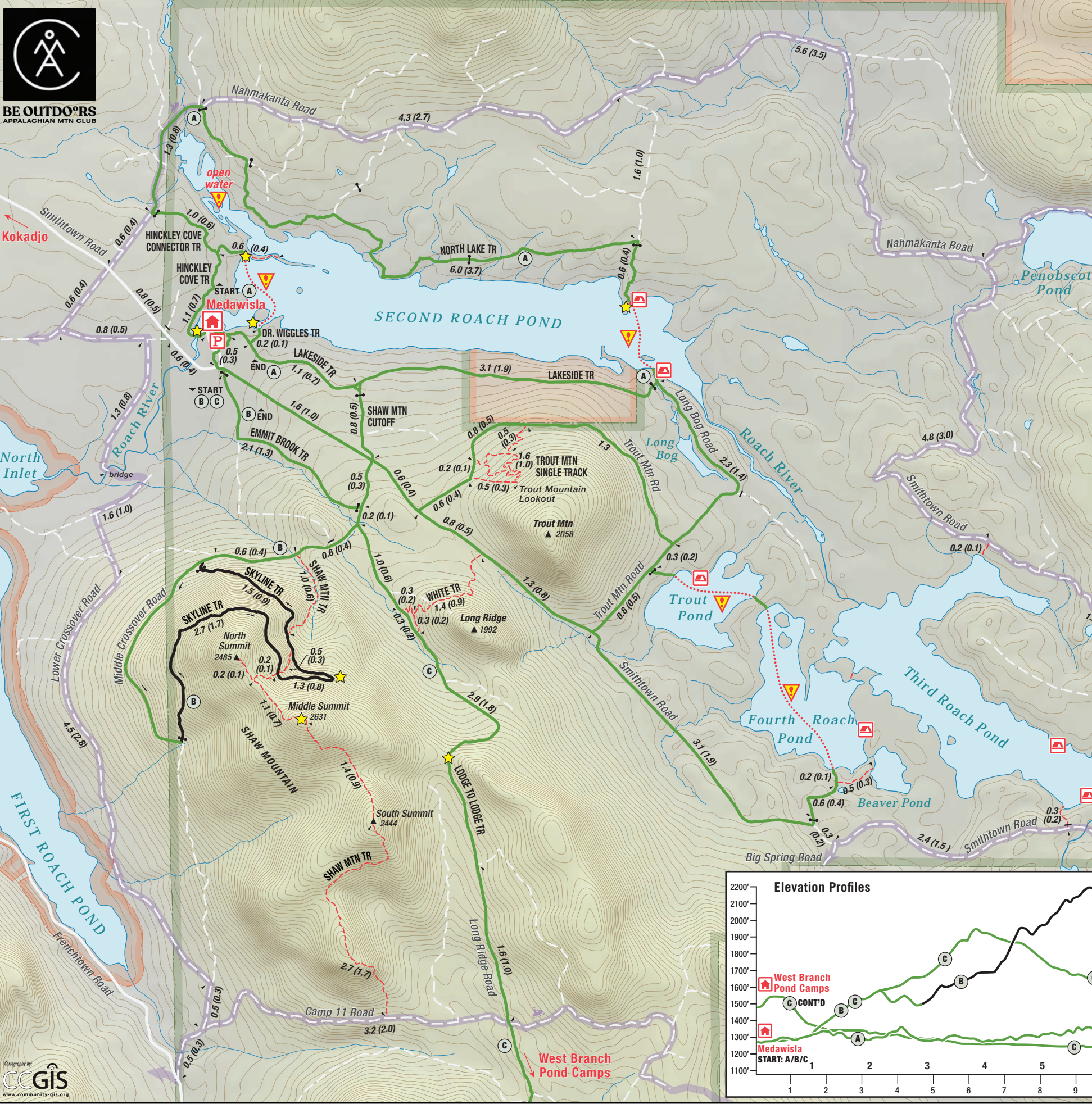




BE OUTDOORS  
APPALACHIAN MTN CLUB

Kokadjo



### Appalachian Mountain Club Maine Woods Initiative Maine Woods International Dark Sky Park Medawisla Winter Trails

- Groomed Trail - Easy
- Groomed Trail - Intermediate
- Groomed Trail - Difficult
- Groomed Trail over Ice  
route subject to safe conditions
- Backcountry Trail (ungroomed)
- Snowmobile Route
- Plowed Road
- Unplowed Road
- AMC Maine Woods Initiative
- State of Maine

- Lodge/Camp
- Parking
- Campsite
- Dark Sky Vista
- Gate
- Other Closure
- Potential Ice Hazard

1.6 (1.0) Trail distance between markers is shown in kilometers (in miles).

0 mile 0.5 1      Magnetic North  
0 km 0.5 1      True North  
Declination 17-1/2° West

Contour interval: 20 ft (100 ft on inset map)      November 2022

#### Suggested Beginner Routes

Loop from Medawisla on Lakeside Trail to Shaw Mountain Cutoff and return via Emmitt Brook Trail: **5.6 km (3.5 mi)**

Loop from Medawisla on Hinkley Cove Trail, cross ice, and return via Dr. Wiggles and Lakeside Trails: **3.0 km (1.9 mi)**

#### Popular Winter Routes

- (A)** Clockwise from Medawisla around Second Roach Pond: **15.7 km (9.7 mi)**
- (B)** Medawisla to Skyline Trail loop: **16.9 km (10.5 mi)**
- (C)** Medawisla to West Branch Pond Camps to Little Lyford, via Lodge to Lodge Trail and Pleasant River Trail: **27.7 km (17.2 mi)**

