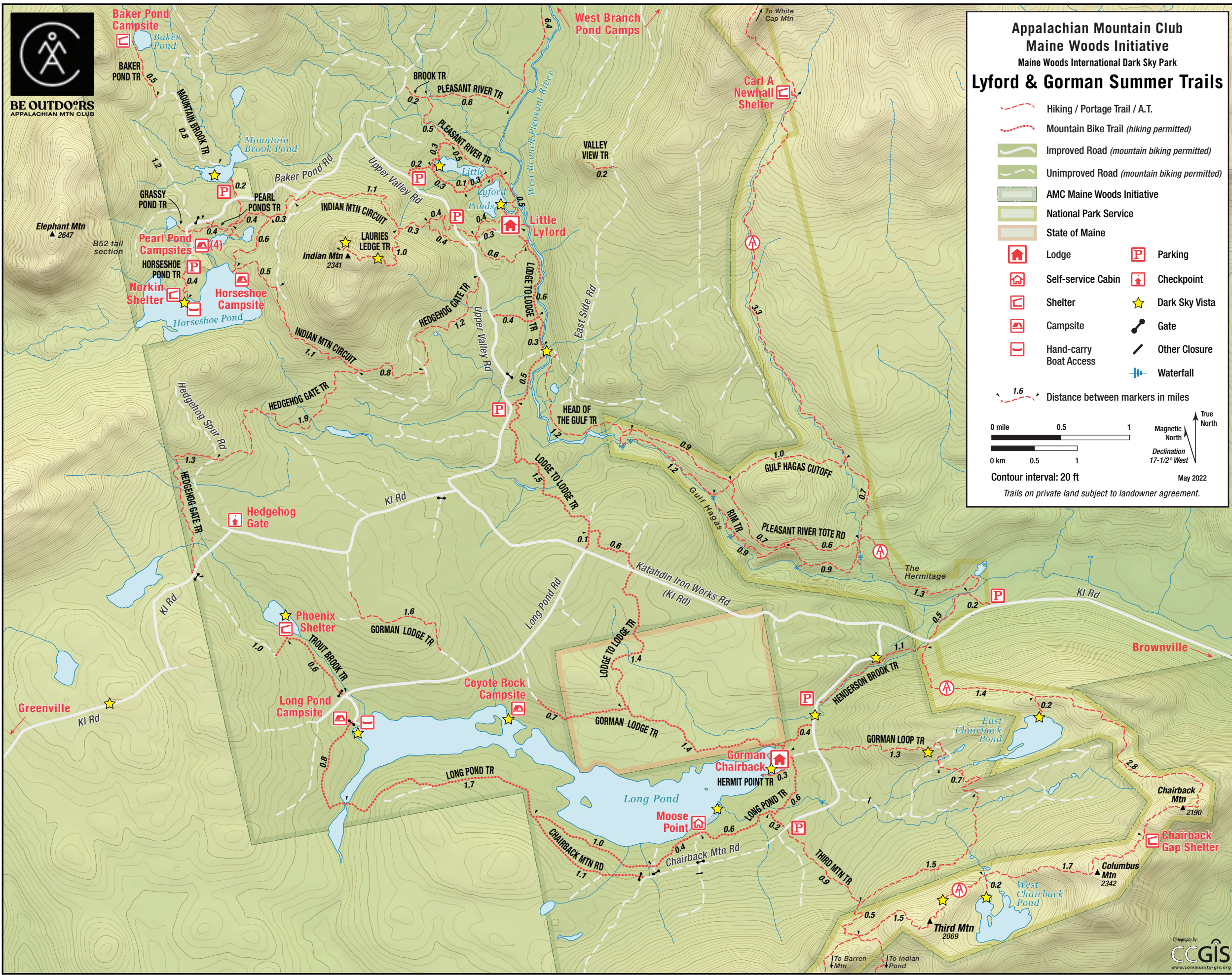




BE OUTDOORS  
APPALACHIAN MTN CLUB



### Appalachian Mountain Club Maine Woods Initiative Maine Woods International Dark Sky Park Lyford & Gorman Summer Trails

- Hiking / Portage Trail / A.T.
- Mountain Bike Trail (hiking permitted)
- Improved Road (mountain biking permitted)
- Unimproved Road (mountain biking permitted)
- AMC Maine Woods Initiative
- National Park Service
- State of Maine

- Lodge
- Self-service Cabin
- Shelter
- Campsite
- Hand-carry Boat Access
- Parking
- Checkpoint
- Dark Sky Vista
- Gate
- Other Closure
- Waterfall

Distance between markers in miles: 1.6

0 mile 0.5 1  
0 km 0.5 1

Contour interval: 20 ft

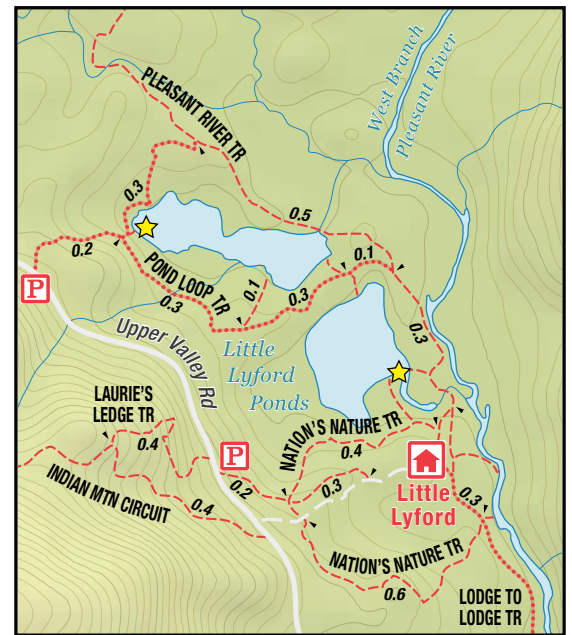
Trails on private land subject to landowner agreement.

May 2022

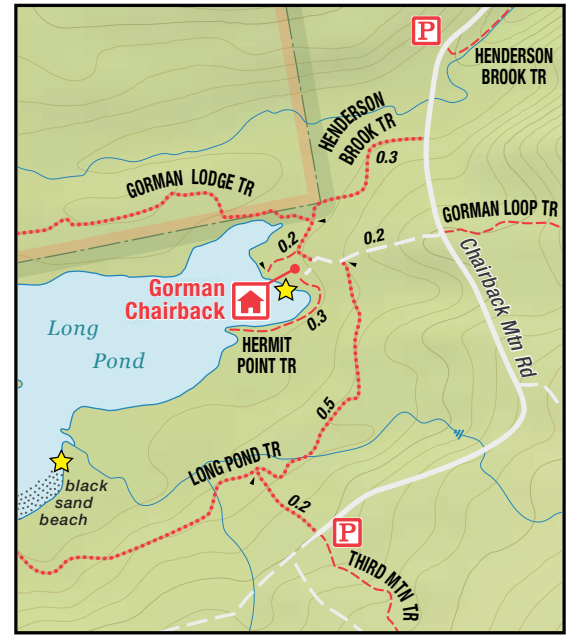
True North  
Magnetic North  
Declination 17-1/2° West



Little Lyford Ponds Area



Gorman Chairback Area



CCGIS  
www.community-gis.org