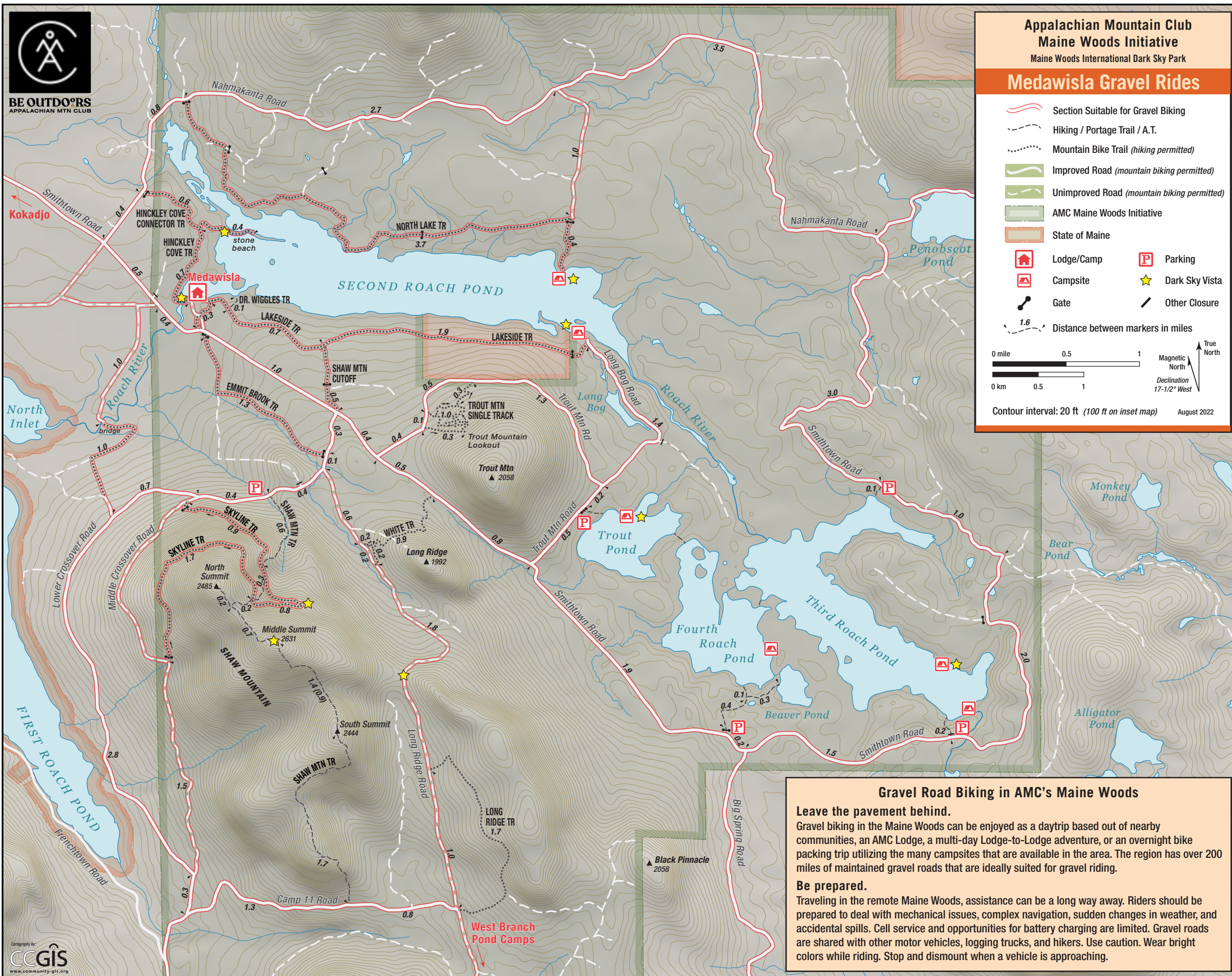


BE OUTDOORS
APPALACHIAN MTN CLUB

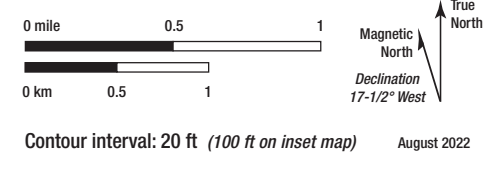


Appalachian Mountain Club Maine Woods Initiative

Maine Woods International Dark Sky Park

Medawisla Gravel Rides

- Section Suitable for Gravel Biking
 - Hiking / Portage Trail / A.T.
 - Mountain Bike Trail (hiking permitted)
 - Improved Road (mountain biking permitted)
 - Unimproved Road (mountain biking permitted)
 - AMC Maine Woods Initiative
 - State of Maine
 - Lodge/Camp
 - Campsite
 - Parking
 - Dark Sky Vista
 - Gate
 - Other Closure
- 1.6 Distance between markers in miles

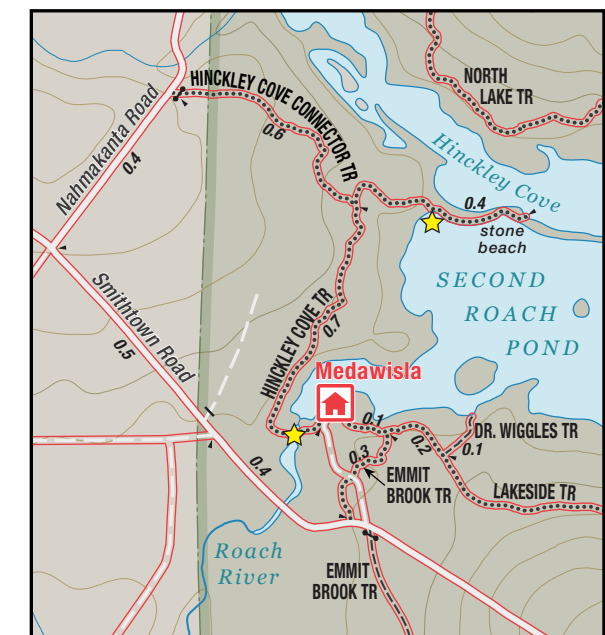


Gravel Road Biking in AMC's Maine Woods

Leave the pavement behind.
Gravel biking in the Maine Woods can be enjoyed as a daytrip based out of nearby communities, an AMC Lodge, a multi-day Lodge-to-Lodge adventure, or an overnight bike packing trip utilizing the many campsites that are available in the area. The region has over 200 miles of maintained gravel roads that are ideally suited for gravel riding.

Be prepared.
Traveling in the remote Maine Woods, assistance can be a long way away. Riders should be prepared to deal with mechanical issues, complex navigation, sudden changes in weather, and accidental spills. Cell service and opportunities for battery charging are limited. Gravel roads are shared with other motor vehicles, logging trucks, and hikers. Use caution. Wear bright colors while riding. Stop and dismount when a vehicle is approaching.

Medawisla Area



Medawisla to West Branch Pond Camps

